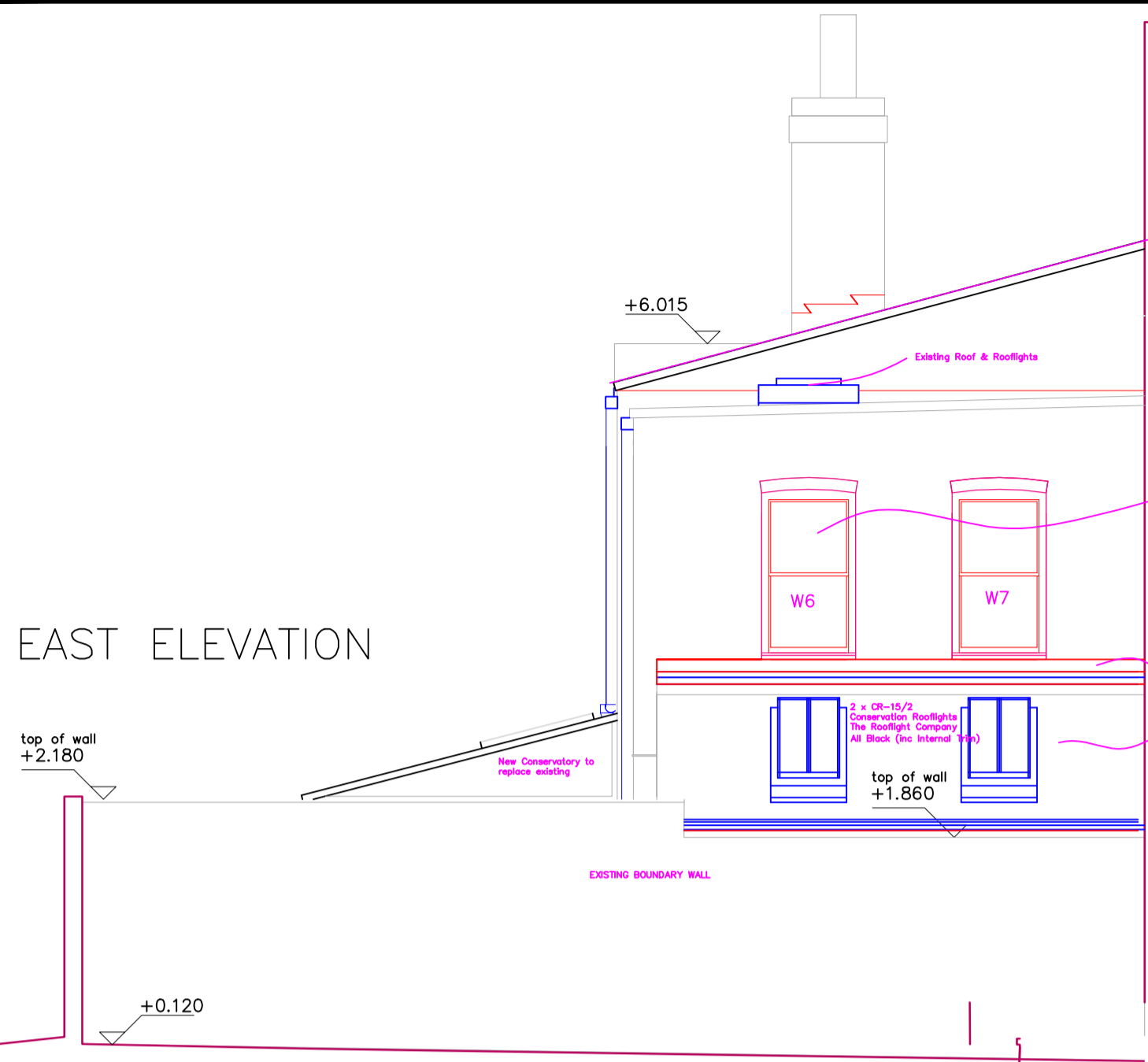
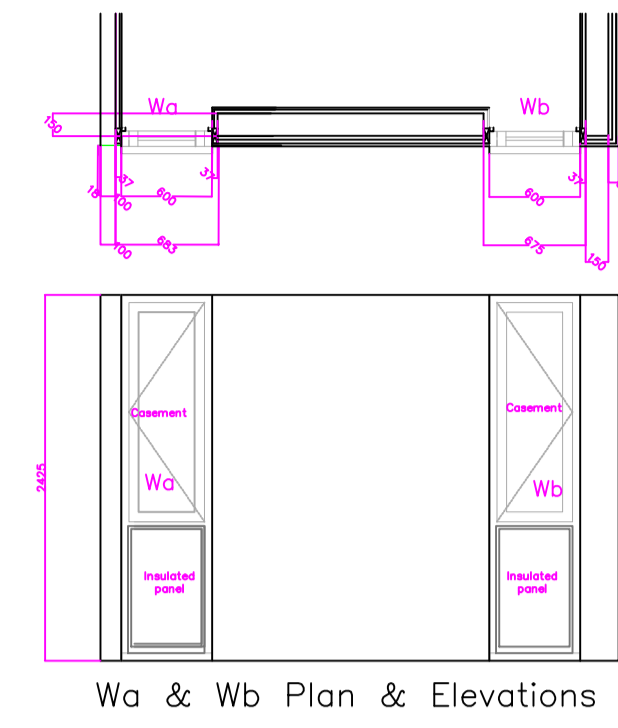
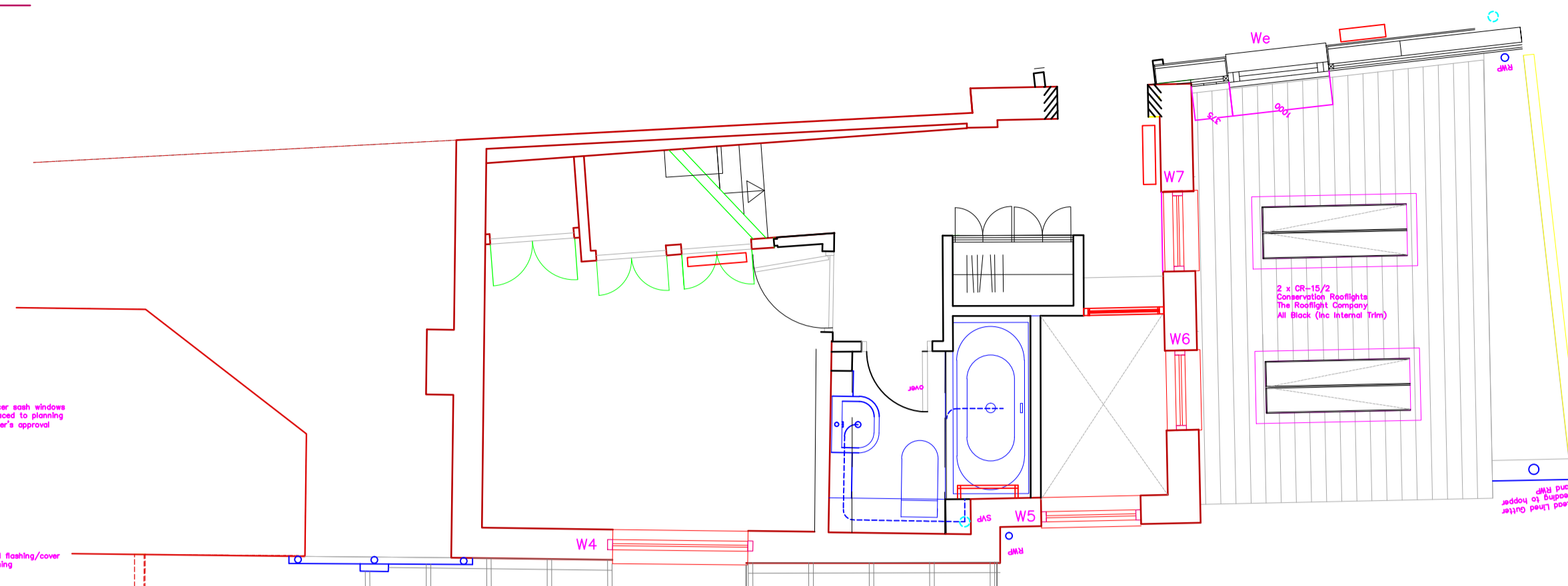


EAST ELEVATION



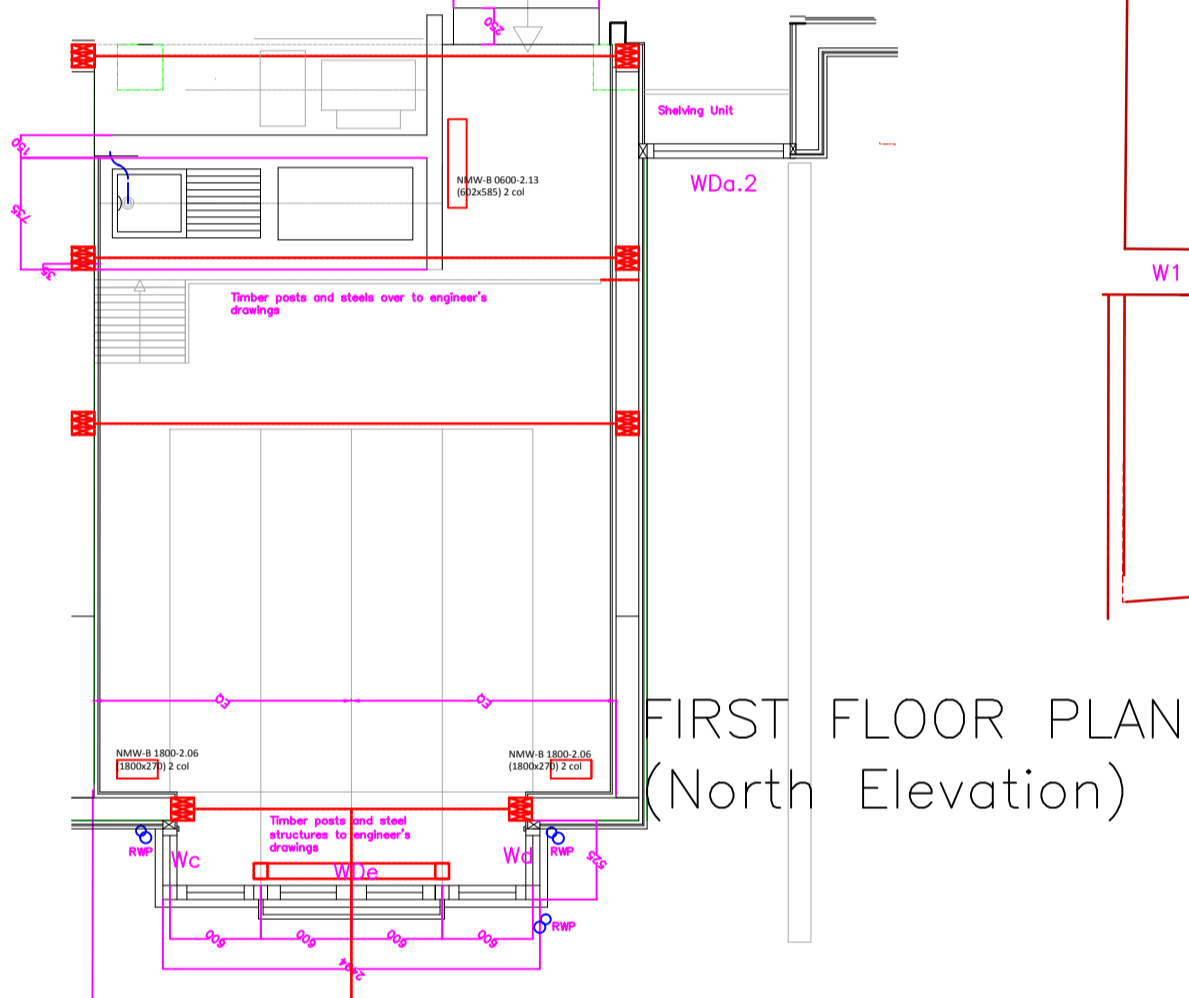
FIRST FLOOR PLAN (South Elevation)



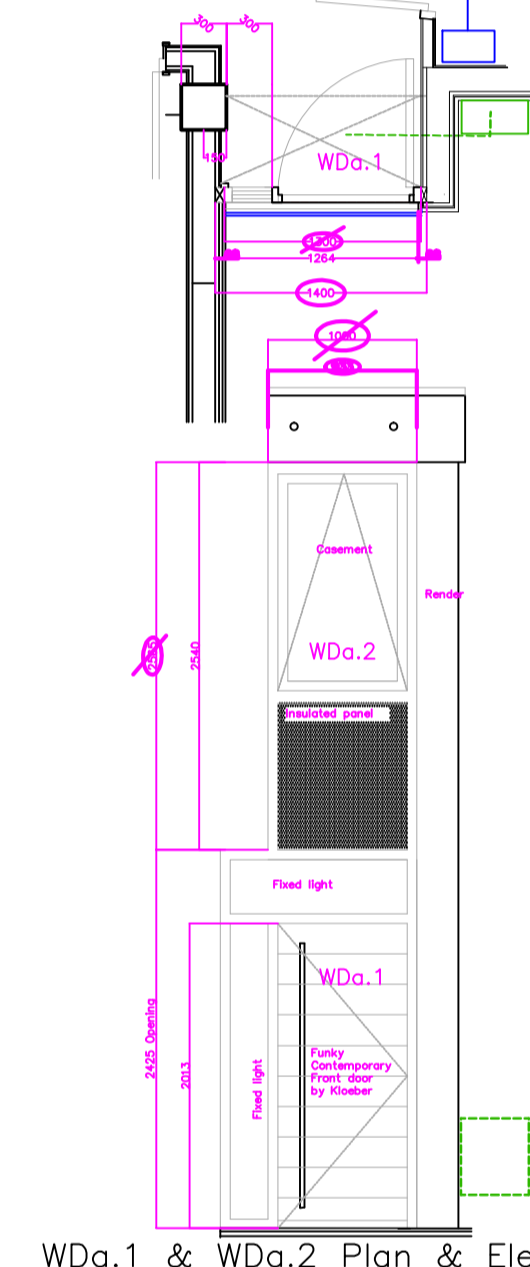
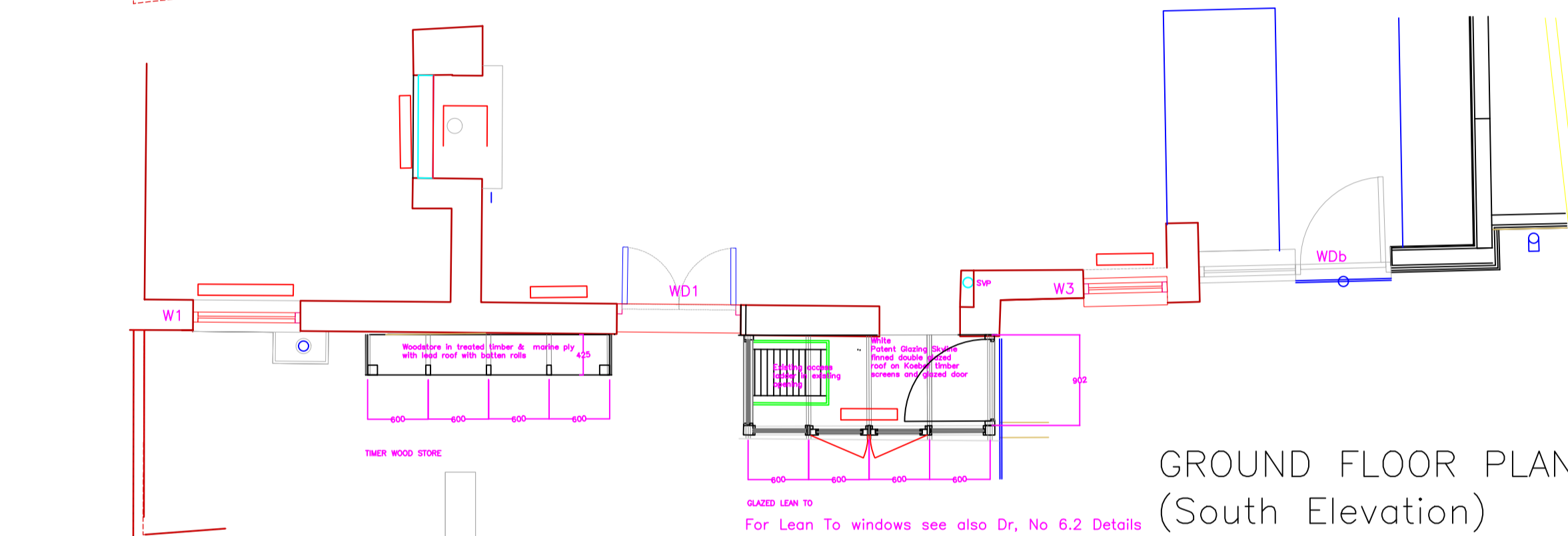
Wa & Wb Plan & Elevations

W1-W7 Replacement Timber Sash Windows		
External brick/render Dimensions		
W1	heights 1780mm width 1050mm	Timber spiral balanced sash window in white with 14mm double glazed units NB Rendered Brick external
W3	heights 1100mm width 820mm	Timber spiral balanced sash window in white with 14mm double glazed units NB Rendered Brick external
W4	heights 1385mm width 1080mm	Timber spiral balanced sash window in white with 14mm double glazed units NB Rendered Brick external
W5	heights 1440mm width 1050mm	Timber spiral balanced sash window in white with 14mm double glazed units
W6	heights 1420mm width 820mm	Timber spiral balanced sash window in white with 14mm double glazed units
W7	heights 1420mm width 820mm	Timber spiral balanced sash window in white with 14mm double glazed units

FIRST FLOOR PLAN (North Elevation)



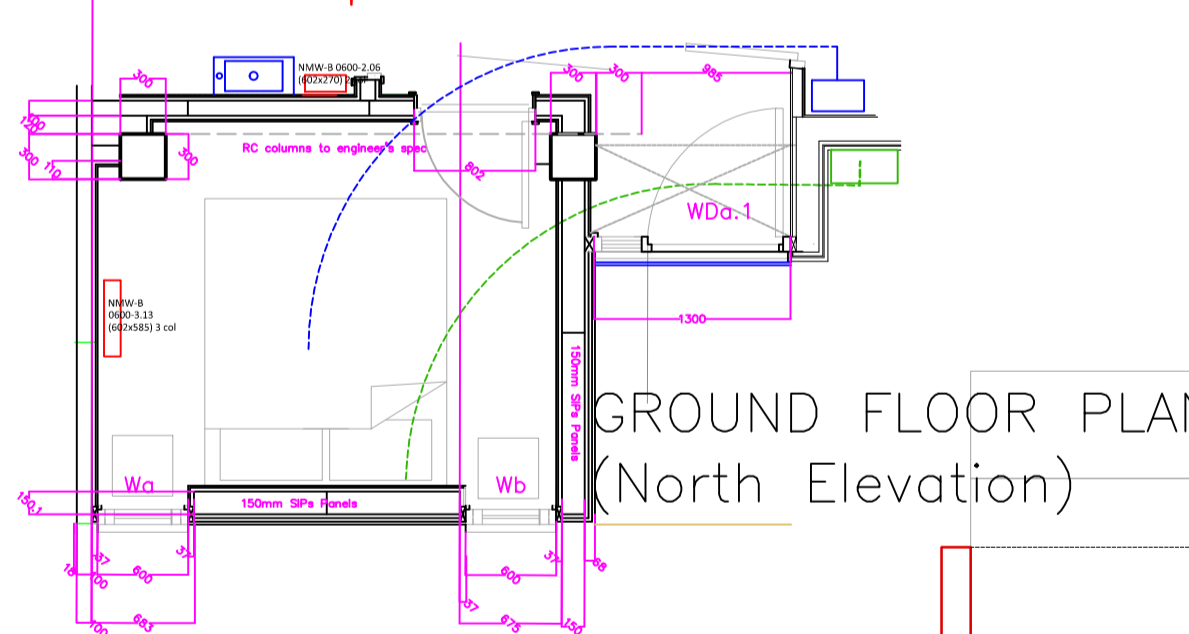
GROUND FLOOR PLAN (South Elevation)



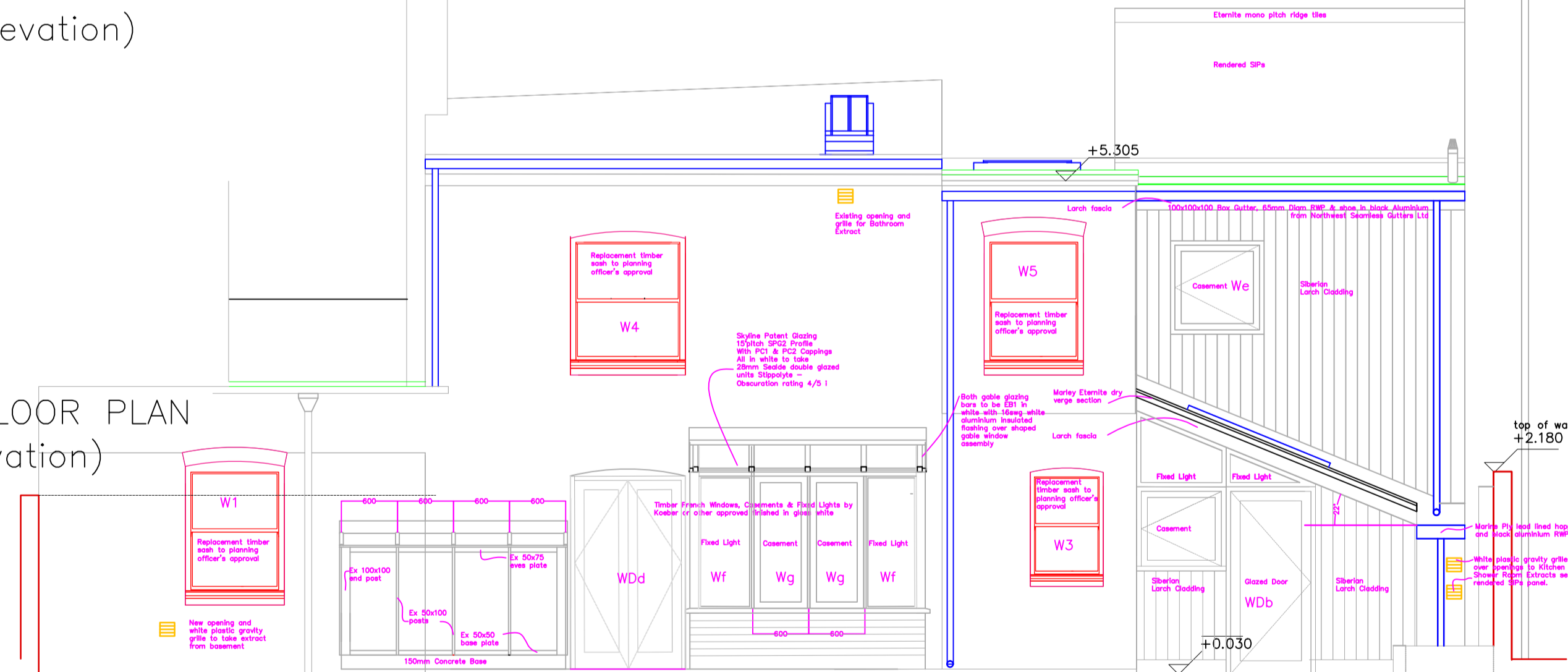
WDa.1 & WDa.2 Plan & Elevations

Wa-We Timber Casements &/or Fixedlights		
Wa	opening 600 x 2425mm (see elevation)	Casement + Insulated panel all in jet black
Wb	opening 600 x 2425mm (see elevation)	Casement + Insulated panel all in jet black
Wc	opening 525 x 2600 x 2745mm (see elevation)	3 fixed lights as side panel in jet black to be coordinated with front of bay Wd
Wd	opening 525 x 2600 x 2745mm (see elevation)	3 fixed lights as side panel in jet black to be coordinated with front of bay Wd
We	opening 1000 x 1000mm (see elevation)	Single Casement in jet black
Wf	opening 600 x 1415mm (x 2off) (see elevation)	Fixedlights in white to be coordinated with lean to gables Wc & Wd
Wg	opening 600 x 1415mm (x 2off) (see elevation)	Casements in white to be coordinated with lean to gables Wc & Wd
Wh	opening 1415 x 900mm (see elevation)	2 Fixed lights in white to be coordinated with lean to fixed lights Wf

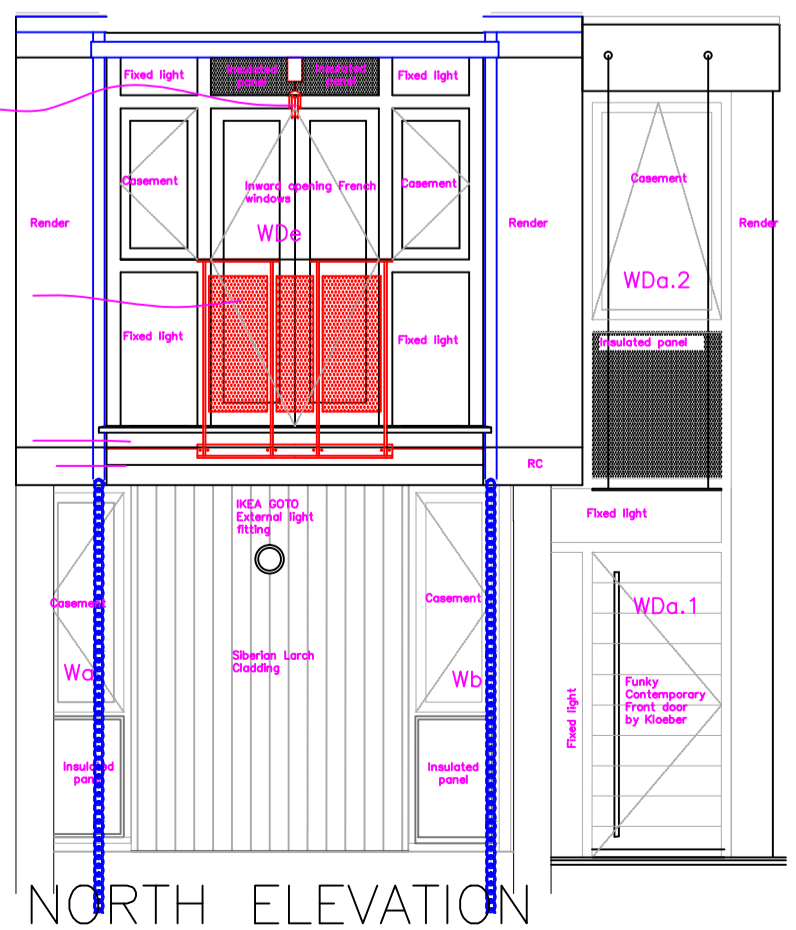
GROUND FLOOR PLAN (North Elevation)



SOUTH ELEVATION



WDa.1	opening 1264 x 2425mm (See Elevation)	2 fixed lights and "Funky" front door all in jet black to be coordinated with 1st flr WDa.2
WDa.2	opening 519 x 933 x mm (See Elevation)	1 Casement & one insulated fixed panel all in jet black Coordinate with grid for WDa.1
WDb	opening 1915 x 2908 (2134) mm (See Elevation)	2 fixed lights, 1 casement & 1 Glazed door all in jet black
WdC	2100 (2365)x902 (Lean-to) (See Elevation)	1 fixed lights, & 1 Glazed door all in whight
WdD	existing opening 2060 (2140)x1230mm (See Elevation)	1 Double Glazed door (French Window) all in whight
WdE	2600 x 2494 (See Plan Section & elevation)	4 Fixed lights, 2 Casements, 1 pair of inward opening French windows & 1 insulated panel with slat for lifting beam all in jet black



LEAN-TO Wh Elevation & Section through Wg+WdC Elevation

WDb Elevation

We Elevation

SOUTH ELEVATION

WDe, Wc & Wd Plan & Section + WDe Elevation

General Notes

No.	Revision/Issue	Date
f	Sash window schedule revised	171108
e	Rear external doors to swing internally	171001
d	End support for patent glazing added	170812
c	Dimensions checked and coordinated with SIPs drawings	170709
b	Dimensions of WDb altered + angle added	170701
a	conservatory omitted & Lean-to and log store added	170502

Firm Name and Address
Francis Graves
graves.arch@btinternet.com
07956 697167

Project Name and Address
The Coach House
Peacock Lane
Old Portsmouth
PO1 2PA

Project	101.00	Sheet	
Date	14.02.2018		10.10f
Scale	1:50		

NB All ironmongery to be in Satin silver finish